

PRODUCT SHEET

FK21 Connect Kit

Wireless sensors that never run out of battery



 ANURA™ Field

FK21 Connect Kit

Portable monitoring kits for fast diagnostics and vibration analysis – anywhere you need it.



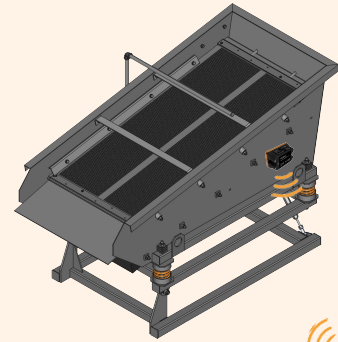
Get in touch to discuss your needs
contact@revibeenergy.com | www.revibeenergy.com



FK21 ANURA Connect Kit

Quick and easy vibration monitoring

The simplest way to start measuring and understanding machine vibrations. A lightweight starter kit combining the VS10-C wireless sensor with the ANURA Connect app.



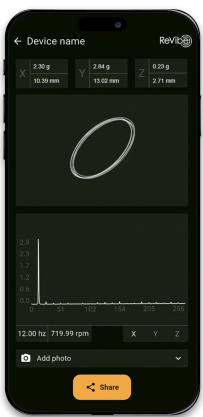
- ✓ View waveforms, FFTs and orbit plots instantly in the mobile app
- ✓ High-bandwidth sensor delivering reliable, detailed vibration data
- ✓ Lightweight, wireless and easy to move between machines
- ✓ Start with a single wireless sensor and expand whenever needed

Hardware



Visualisation software

Analyze vibration data and perform quick field diagnostics using the **ANURA Connect** app.

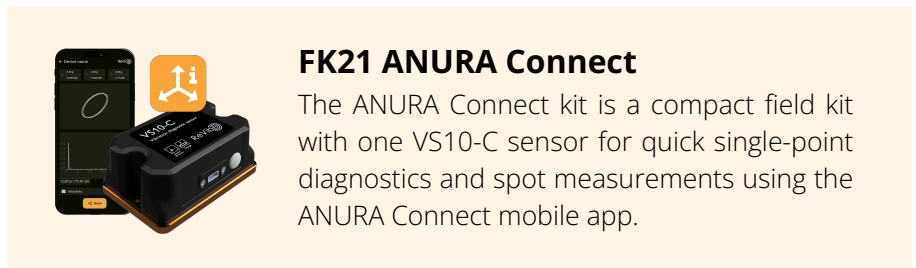


ANURA Connect

Field diagnostics with app

Simple single-sensor diagnostics with the ANURA Connect mobile app.

The app shares a file that can be opened in Vibreshark for further analysis.



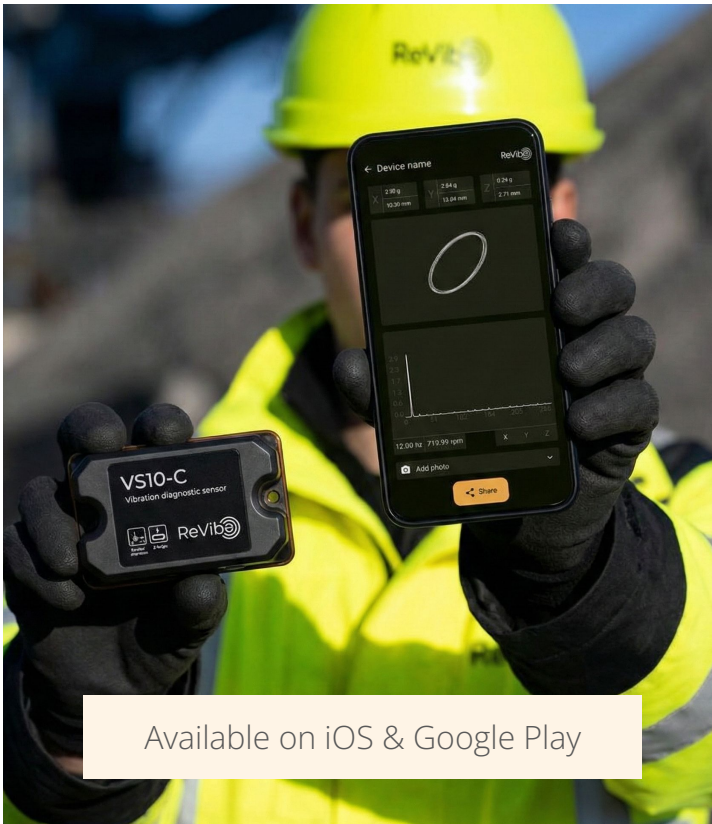
Simple sharing functionality

Share analys to your colleagues by the push of a button.

The app shares both a screendump and an attached file that can be opened in Vibreshark for further analysis.



VIBRATION MONITORING SOFTWARES



Available on iOS & Google Play



ANURA Connect

Vibreshark seamlessly integrates with ANURA sensors to provide real-time machine diagnostics and deep data insights – all through a flexible and intuitive interface.

- ✓ Analyze vibration patterns instantly
- ✓ Identify imbalance and misalignment
- ✓ Export screenshots or reports directly from your device
- ✓ Use alongside self-powered Anura sensors – no cables needed



TECHNICAL SPECIFICATIONS



VS10-C Vibration Sensor

Power supply	Rechargeable battery, USB-C
Time Synchronization	<5µs
Accelerometer	3-axis MEMS, +/- 16g range
Sample rate	Up to 16 kHz
Dimensions (LxWxH)	90 x 60 x 38 mm
Ingress Protection	IP67
Operating Temperature	-40 °C to +80 °C
Weight	250 g
Mounting	2 x magnet mounts. Screw, adhesive tape or glue possible
Communication	2.4 GHz, 50 m line of sight

Sensor-calculated values

All values are measured and calculated in the sensors nodes, in X, Y and Z axes.

- RMS acceleration
- Peak amplitude of acceleration
- Frequency of the highest spectral peak
- Peak-to-peak amplitude of displacement
- Maximum recorded acc
- Root mean square amplitude of velocity
- Planar stroke calculated with method A
- Root mean square amplitude of acceleration
- Crest factor of acceleration
- Peak amplitude of velocity
- Planar stroke calculated with method B

